

VIAscan®

Video Image Analysis Carcase System



**Cedar Creek
COMPANY**

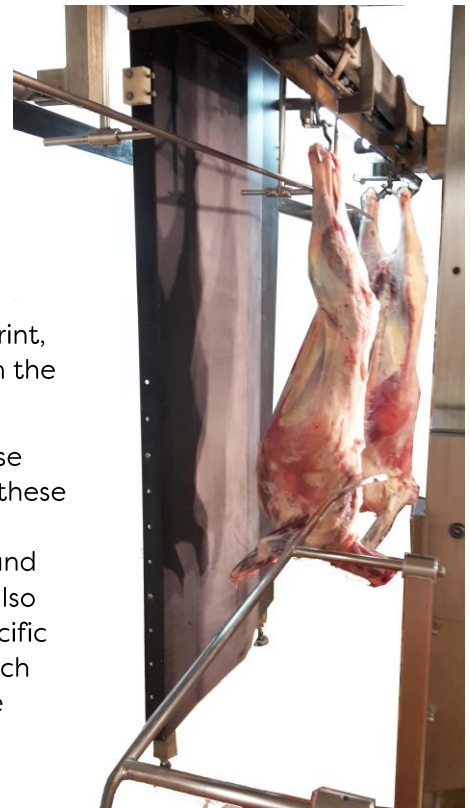
The VIAscan® Carcase System uses Video Image Analysis (VIA) technology to objectively assess carcase quality and yield. It is a non-intrusive, in-motion, complete station, situated prior to grading at the end of the slaughter floor.

Throughout 2017, the systems were successfully used to make commercial processing and carcase payment decisions on over 14 million sheep and more than 500K beef sides.



The system does not pose any OH&S risks to the operator or carcase and has a small footprint, so it requires minimal space on the slaughter floor.

VIAscan takes a series of precise measurements and processes these through the proprietary host software, to predict saleable and lean meat yield. The system also measures a series of other specific characteristics in real time which can be used towards objective grading standards.



FoodChain

VIAscan

**body
TRACE**
CARCASS CORRELATION SOLUTION
POWERED BY CEDAR CREEK COMPANY

Australia PO Box 1405, Stafford QLD 4053 ▶ 8/87 Webster Rd, Stafford QLD 4053
phone: +61 (07) 3356 0999 ▶ fax: +61 (07) 3356 2366

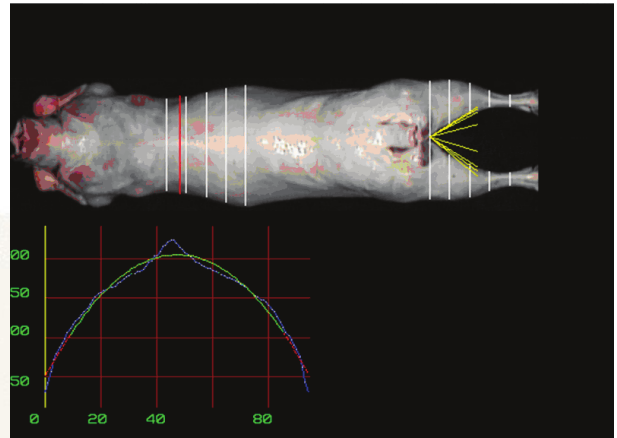
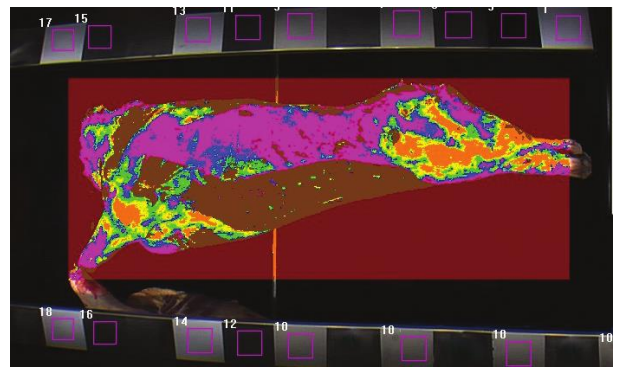
New Zealand Cedar Creek Company (NZ) Limited ▶ PO Box 80246, Green Bay, Auckland 0644
Unit 772, 19 Ormiston Road, East Tamaki, Auckland ▶ phone: +64 (09) 634 4075

**Cedar Creek
COMPANY**

www.cedarcc.com

CCC's VIAscan system is:

- ♦ Fully automated and high speed – Images are taken real-time as each carcass moves along the chain. The system is capable of functioning at chain speeds of up to 1200 bodies per hour on a small stock slaughter floor
- ♦ Easy to integrate – The VIAscan system fully integrates to existing grading systems and is located at the end of the slaughter floor. Data captured can be uploaded directly to web-based, supply chain management applications or other plant information systems.
- ♦ Requires minimal labour - A dedicated operator is not required. Operation can be simply supervised by an on-floor worker.
- ♦ Read types are customisable – Measurement types can be customised to suit processor requirements and grower needs, with results available in real-time. Data can be fed into livestock payment grids (such as CCC's FoodChain livestock payments module) and carcass feedback systems (CCC's DataChain carcass feedback web portal), delivering results.
- ♦ Robust – These systems withstand the test of time within harsh processing environments. The stainless-steel casing with IP66 equivalent rating, guarantees durability in the most severe production setting withstanding knocks, temperature extremes. The tough resistive touch screen allows for easy data input using fingers or gloved hands.

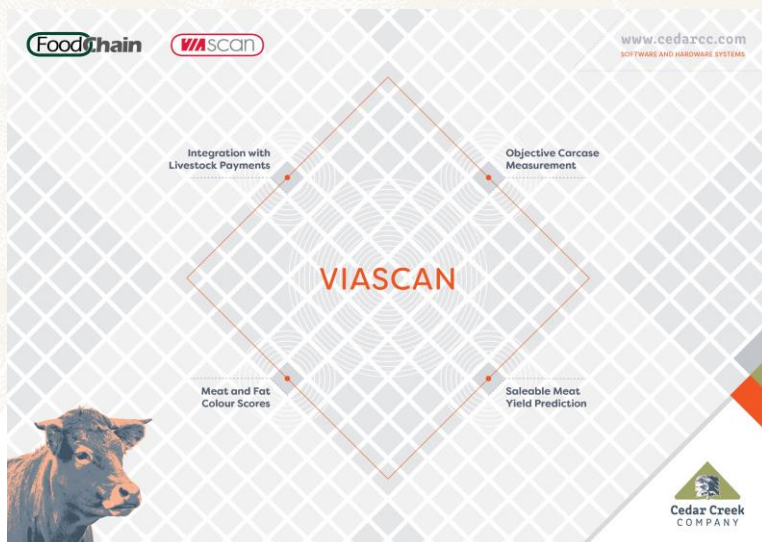


Data outputs and results include:

- ♦ Predicted saleable lean meat yield
- ♦ Primal weight % (if used with CCC's grading station)
- ♦ Europ classification – fat and conformation score
- ♦ Total fat %

Data analyse, reporting, information sharing functions include:

- ♦ Cost effective solution for on-line objective carcass yield assessment down to a primal level. This delivers accurate yield predictions for payments to a per carcass level and maximises returns.
- ♦ Livestock suppliers can be benchmarked based on both yield and quality.
- ♦ Improves trust in trading relationships through objective measurement and transparency in audit systems.
- ♦ When used with CCC's bodyTRACE carcass tracking system, the carcass results can be used for grouping and sorting in to the chillers and for boning room plans.



SOFTWARE AND HARDWARE SYSTEMS

Australia PO Box 1405, Stafford QLD 4053 ▶ 8/87 Webster Rd, Stafford QLD 4053
phone: +61 (07) 3356 0999 ▶ fax: +61 (07) 3356 2366

New Zealand Cedar Creek Company (NZ) Limited ▶ PO Box 80246, Green Bay, Auckland 0644
Unit 772, 19 Ormiston Road, East Tamaki, Auckland ▶ phone: +64 (09) 634 4075

Cedar Creek
COMPANY

www.cedarcc.com